



San Jose IBM Retirement Club Newsletter



May, 2006

Volume XXI

Number 5

PRESIDENT'S CHAT

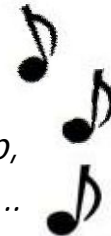
Annual Club Picnic

Tuesday, May 23, 2006
Cunningham Park

You still have time to sign up for the Annual Picnic!!



*Take me out to the picnic,
Take me out for some fun,
Give me some Tri-Tip and Soda Pop,
I don't care if I eat way too much...*



See Page 13 for the reservation form.

In May of 2000, we experienced a 'heat wave' the day of our picnic. I doubt anyone will complain about the heat this year!! Bill Souza and his committee have been very busy planning and organizing this event, and I know we will all have a good time.

See ya'll at the Picnic,
Ina Havens

Letter To The Editor

Volunteer with Second Harvest Food Bank

For the past ten years I have been a volunteer Site Chair person with Second Harvest at a distribution site in Campbell. This Brown Bag program provides a weekly bag of food to low income seniors.

During these years, I have been satisfied that Second Harvest Food Bank is one of the best managed and most efficient non-profit organizations in the Valley.

If you like to help those in need and you have 2 to 3 hours a week to make a difference, Second Harvest is interested in your volunteer service. They have volunteer positions similar to mine available at various locations around the County.

If you are interested in finding out more about these rewarding volunteer positions, please contact Alisa Matthew, Program Coordinator, by email at amatthews@shfoodbank.com or at 408-266-8866 ext. 224, or or call me at 408-266-7639 with related questions.

Sincerely,
Ron Harlan

China/Hong Kong Trip Report

Forty eight of us headed to China on March 22. After a long flight, we arrived in Shanghi to very nice weather, which persisted through most of our trip. Shanghi is growing at an enormous rate, in hotels, residential high rises and infrastructure. Beijing, where we ended our trip, is growing at a similar rate, partially because they are hosting the 2008 Olympics. It was a fascinating trip. Things that awed us included: the trackers who walk the river bank pulling boats through rapids with harnesses by the Li River cruise at Guilin, the enormity of the Great Wall, the continuing recovery of the terra cotta warriors and horses near Xian and the beauty and vitality of Hong Kong (for the 27 who continued on there for four days after Beijing). For those of us who haven't followed events in China well the last few years, it was an education on changes there. For example, the Chinese government has relocated 1.3 million people as a result of the building of the Yangtze River dam, and there are more relocations to come as the water behind the dam continues to rise. In the large cities entire blocks of housing are being demolished to make room for high rise structures. The government owns all the land so there is little room for disagreement, but there is reimbursement for property given up. You see a lot of uniforms but their presence is not onerous. We found the people to be mostly friendly, and sometimes very curious about our presence.

Continued on page 10

San Jose IBM Retirement Club

Dept DKTA/F005 SVL
555 Bailey Ave.
San Jose, CA 95141

OFFICERS:

President:

Ina Havens 847-4793
cliffina@verizon.net

Vice-President:

Art Dill (831) 338-3069
ArtHDill@comcast.net

Secretary:

Sally Large 782-7422
largesj@aol.com

Treasurer:

Bernie Coullahan 356-5311
becoul@yahoo.com

Membership:

Ed Mueller
ibmsjrc@hotmail.com

Communications:

Walt Cole 972-1178
opawalt@pacbell.net

Directors-at-Large:

Maureen Sweet (831) 636-8851
mmsweet@hollinet.com

Ruth Price 356-8975
ruthprice@comcast.net

Millie Wiedemer 779-7744
milliew23@yahoo.com

COMMITTEES:

Sunshine:

Topsy Thompson 377-4314
topray4314@cs.com

Community Service - Adopt-A-Highway:

Doug & Evelyn Dean 264-9502
dougnevie@comcast.net

Hard Drive Fitness Club:

John Czerniec 224-6230
jzern@earthlink.net

Past Presidents/Advisors:

Mel Olsen 972-2449
molsen9878@AOL.Com

Ed Henschel 270-4142
eeezyed@sbcglobal.net

Gino Bottoni 377-8593
Bill Souza 356-6280

BSouza6280@aol.com
Glen Furlong
GFurlongSr@aol.com

Terry Milinic' 265-5908
Theresano1@yahoo.com

Ron Harlan 266-7639
rharlan@sbcglobal.net

George Nale 779-4275
geoandizn@cs.com

Ina Havens 847-4793
cliffina@juno.com

Ernie Veal 224-3584
ecveal@juno.com

George Walker 268-7623
georgewalker@yahoo.com

Membership Report Ed Mueller

e-mail: ibmsjrc@hotmail.com

April 20, 2006

Membership History

Year	March	April
1996	1608	1611
2005	2051	2051
2006	2093	2082

New Members

Richard Bernosky
Richard Hannan
Ronald Morris
M B Parriott
Alexander Perez
John Russell
Dorothy Weisheit
Sheree Williams

plus 4 others

In Memoriam

Robert C. Baker
Richard Clark
Gerald F. Crane
Carol B. Debolt
John Jake Kocher
J. Daniel Shaver
Mary Stenger

Next Club Board Meeting: Thursday, May 18, 2006

10:00 am,

Hitachi/IBM Cottle Rd.
Cafeteria, Bldg 011

The San Jose IBM Retirement Club Newsletter is intended for use by members of the Club and their families. Contributions are the sole responsibility of the authors and should not be construed to represent an official position of the San Jose IBM Retirement Club or the IBM Corp.

Change of Address

If your address label is incorrect, or you have moved or are planning to move, please inform Ed Mueller, the Membership Director.

Send your new address and phone number by mail or e-mail.

Mail: send to:

San Jose IBM Retirement Club
Dept DKTA/F005 SVL
555 Bailey Ave.
San Jose, CA 95141

Ed Mueller,

e-mail: ibmsjrc@hotmail.com

Sunshine Report

Lenora Pressler had her small toe removed and she is still recovering. She said she is coming along really well. Her husband is taking very good care of her.

Pat Viallet had knee surgery and it has taken a little longer to heal than she hoped for. She is still in pain, but doing OK. Her husband is taking very good care of her.

Well ladies, you all know, "a good man is hard to find." Lenora and Pat found one each.

Shirley Beyler will be having a knee replacement on May 25. Good luck to you, Shirley.

Well I know some of you out there are in the Hospital, or going into the hospital, for one thing or another, We are praying you will soon be well. I know also that some of you had a bout with that mean old cancer, in and out with treatments, I hope you will soon be over the treatments, and feeling better. I am praying for you. Some of you still have a little trouble with that mean old flu--it does take a long time to get over it, but you will be up and running around soon. I just know you will. To all my retired friends, take care, Now that we have nice weather, we all will start to feel lots better.

Please let me know if you are sick, in the hospital etc.

**Topsy Thompson,
the Sunshine Lady!!
(408) 377-4314**

TRIPS & ACTIVITIES CALENDAR

Date	Event	TAR	Page	Contact	Phone
May 1-20, 2006	Russia/Eastern Europe		--	Art & Sharry Dill	831 338-3069
May 5, 2006	Walking/Cultural Tour: SJ City Hall		8	Fred Grometer	264-9157
May 9, 2006	PC Club: Excel Spreadsheet		10	Walt Cole	972-1178
May 10, 2006	Adopt-a-Highway		10	Doug & Evelyn Dean	264-9502
May 12, 2006	Watson Senior Bowling Tournament		11	Topsy Thompson	377-4314
May 18, 2006	IBM Retirement Club Board Meeting		2	Ina Havens	847-4793
May 19, 2006	Hike: Pinnacles		7	Gil & Julie Feller	247-6769
May 19, 2006	Monterey Big Hike Meeting		7	Jim & Dottie Riley	268-5482
May 20, 2006	Guide Dogs for the Blind		5	Bill & Madeline Souza	356-6280
May 23, 2006	Annual Club Picnic		1,13, 14	Bill & Madeline Souza	356-6280
May 26, 2006	Mammoth Big Hike Meeting		7	Gil & Julie Feller	247-6769
June 6, 2006	Bocce & Lunch		5	George & Carole Walker	268 7623
June 7, 2006	NUMMI Plant Tour		8	Fred Grometer	264-9157
June 9, 2006	Hike: Uvas Canyon		8	Lee Westfall	225-7667
June 9-18, 2006	Portland Rose Parade & Canadian Pacific Northwest		--	Bill & Madeline Souza	356-6280
Jun 14, 2006	Adopt-a-Highway		10	Doug & Evelyn Dean	264-9502
June 29, 2006	Cupertino Band in Park		6	Fred Grometer	264-9157
July 10, 2006	Indian Casino: Blackoak		5	Topsy Thompson	377-4314
July 18, 2006	Kitchen Kut-Ups in Rohnert Park		5	Bill & Madeline Souza	356-6280
July 23-28, 2006	Mammoth Big Hike		7	Gil & Julie Feller	247-6769
Aug 2-3, 2006	Hot August Nights		4	Ernie & Shirley Veal	224-3584
Sep 10-12, 2006	Reno Circus Circus		4	Glen & Ruth Furlong	378-8226
Sep 26, 2006	San Francisco Cliff House & City Zoo	3	6	Bill & Madeline Souza	356-6280
Oct 1-6, 2006	Monterey Big Hike		7	Jim & Dottie Riley	268-5482
Oct 2, 2006	Indian Casino: Chukchansi		5	Topsy Thompson	377-4314
Oct 3, 2006	TI Culinary & DeYoung Museum	2	6	Bill & Madeline Souza	356-6280
Oct 31 - Nov 8, 2006	Mississippi River Fall Foliage Cruise		4	Ina Havens	847-4793
Nov 6-10, 2006	Baja Mexico Cruise		4	Art & Sharry Dill	831 338-3069
Nov 10, 2006	COPIA		6	Bud & Phyllis Souza	371-2959
Apr 16-28, 2007	Egypt & Nile River Cruise		5	Art & Sharry Dill	831 338-3069

Travel Trips

Hot August Nights

Wednesday-Thursday, August 2-3, 2006

Come join us for our annual Hot August Nights gambling trip.

The trip will be on August 2nd and 3rd. Reno will be full of custom cars. Last year we enjoyed a custom car parade right outside of Circus Circus on Wednesday night. This year there is a custom car exposition around The Nugget on Thursday.

This year we will be going to Boom Town, The Siena (down town Reno) and Circus Circus the first day. Overnight at Circus Circus is included. The second day we will go to Cal Neva and then The Nugget. We will then return home.

Price for the trip is \$62.50 per person double occupancy. The Bonus is \$25.00 + \$2.00 meal credit. Private room is \$14.00 extra.

If you are interested,
Contact:

**Ernie or Shirley Veal, (408) 224-3584 or
ecveal@juno.com**

American Queen/Fall Foliage Cruise

October 31 - November 8, 2006

"From St. Louis northward," Mark Twain said, "the people don't dream, they work." As hard as the river has been worked, its scenery remains enchanting and largely unspoiled! Experience the captivating views of the upper Mississippi River's Fall Foliage while on the new American Queen, 'steamboatin'. Stops include Minnesota, Wisconsin, Iowa (Dubuque, Davenport & Burlington), Hannibal, Missouri, Mark Twain Country.

Tour Includes:

- Round-Trip Transfers & Air Fares
- One pre-night in St. Paul, including breakfast and city tour.
- 7 nights aboard the American Queen
All meals on Board
- Baggage Handling (1 bag per person)
- Pre-Trip Orientation (early 2006)

All inclusive Costs begin @ \$2520
(depending on the stateroom.selection)

Contact:

**Ina or Cliff Havens, (408) 847-4793
or cliffina@juno.com**

Circus Circus Under the Big Top Reno Two Nighter

September 10 - 12, 2006

\$99.00 per person,
double occupancy
(Single Supplement \$27.00)
Bonus \$21.00 cash,
\$2.00 Food Credit,
\$11.00 Slot Credit
Casino Stops

Accepting reservations now.
For a flyer and reservation form, Contact:

Glen or Ruth Furlong
1235 Walnut Drive Campbell, CA
(408) 378-8226
Email: GFurlongSR@aol.com

Baja Mexico Cruise November 6-10, 2006

Join us aboard the Royal Caribbean's Monarch of the Sea for 5 days and explore the vibrant culture, world class beaches, lush green rain forests and vividly painted architecture. Ports of call are San Diego, Catalina Island and Ensenada, Mexico.

Features:

- Roundtrip luxury motor-coach transportation San Jose--Los Angeles (no flight).
- 4 night Baja Mexico Cruise aboard Monarch of the Sea.
- Includes all meals onboard ship and shipboard activities.
- Baggage handling for 1 suitcase per person
- All taxes for included features including Port Taxes.
- Driver & Stevedore Gratuities (except shipboard gratuities.)
- Interior stateroom Double \$470 pp
- Ocean view stateroom Double \$498 pp
- Junior Suites Double \$760 pp

This cruise sells out very quickly and cabin availability becomes scarce - if you would like to join us please contact us as soon as possible and secure your cabin with a \$250 deposit. Final payment is due by July 31, 2006.

Contact: **Art or Sharry Dill at (831) 338-3069
e-mail us at ArthDill@comcast.net**

During the month of May the Dills will not be available so please contact **Kris or Jenny Bhola at (408) 489 -9665**

Day Trips

San Francisco Cliff House and City Zoo

Tuesday, September 26, 2006

Trip Activity rating-3

The day starts with lunch at the Cliff House which is a San Francisco treasure with great food and atmosphere in historic surroundings. They just underwent a two-year remodeling project to unveil its centerpiece, Sutro's: a dramatically modern two-story room with a wall of glass looking out to ocean and wind-blasted cypress trees. But the addition makes sense. The intricate ceiling's metal beams recall the old ceiling of the Sutro Baths, a turn-of-the-century swimming palace that was part of Playland-by-the-Sea, a long-gone but still-treasured amusement park that once lived on this shore. After lunch visit the San Francisco Zoo which has a long and glorious history, and has been a civic treasure since the City's heyday during the first part of the 20th century. The evolution of the San Francisco Zoo into today's New Zoo has been one of steady progress in transforming the Zoo into a conservation Zoo. The San Francisco Zoological Society's highest priorities are providing quality animal care, wildlife conservation and education, and connecting people with animals.

Depart 8:15 AM Return 6:15 PM

IBM/Hitachi Plant Bldg. 109 Parking Lot

\$88.00 PER PERSON-- Tour price includes:
Round trip deluxe motor coach transportation
Hosted lunch at the Cliff House
Zoo tickets.

Driver's gratuity

These trips fill up fast so don't wait. To reserve your spot:

Contact:

**Madeline or Bill Souza at (408) 356-6280 or
bsouza6280@aol.com**

T.I. Culinary Academy and New DeYoung Museum

Tuesday, October 3, 2006

Trip Activity rating-2

The day starts with an early lunch at Treasure Island's Job Corp Culinary Academy prepared and served by a staff of students training to be the top chef's of tomorrow. These students are being trained in all of the finer culinary points, customer service and rotate all jobs before graduation. Save room for a delicious desert to conclude this wonderful lunch. Next you visit the new DeYoung museum in Golden Gate Park, which is a state of the art facility that integrates art, architecture, and the natural landscape in one multi-faceted destination. Admission to the current special exhibit will be included. Be sure to take the elevator to the observation floor at the top of the signature tower to get a dramatic 360 degree view of the west end of the city and the Golden Gate bridge.

Depart 8:15 AM Return 6:15 PM

IBM/Hitachi Plant Bldg. 109 Parking Lot

\$65.00 per person-- Tour price includes:

- Round trip deluxe motor coach transportation
- Early lunch at Culinary Academy
- Museum and special exhibit tickets.
- Driver's gratuity

These trips fill up fast so don't wait. To reserve your spot:

Contact

**Madeline or Bill Souza at (408) 356-6280 or
bsouza6280@aol.com**

COPIA

Friday, November 10, 2006

Located in California's Wine Country on the banks of the Napa river. Napa's downtown newest attraction. COPIA offers something to excite every palate of wine, food and the arts. Plan to spend the day at COPIA to stroll through the gardens, examine the exhibits, enjoy the wine and food tastings, AND enjoy a hosted gourmet lunch.

Inclusions:

- * Motorcoach
- * Admission to COPIA
- * Guided tour of the complex
- * Cooking demonstration
- * 3 course lunch, dessert and wine.

All this for only \$79.50 per person.

For reservations call:

Bud or Phyllis Souza

408-377-6094 or 408-371-2959

Cupertino Symphonic Band

Memorial Park, Cupertino

Stevens Creek Blvd., near Mary Avenue

(Across from deAnza College)

5:00 PM, Thursday, June 29, 2006

Remember those wonderful "Pops" concerts by John Phillip Sousa and Arthur Fiedler? Well...you probably don't remember--Sousa died about the year you were born, and Boston is a long way from San Jose. But now you have a chance to live those marvelous times--right here in Silicon Valley. It's not really a "Walking Tour" and it's not in the morning, but it is **Cultural**. The concert is free, but bring a couple of food cans that get distributed to the needy.

This outdoor concert starts 6:00 PM, but we can gather early for one of our famous pot-luck picnics. Bring your sandwiches and drinks and something to share for 10 or so others--dessert or hors d'oeuvres. Deviled eggs will not be rejected. Unless you enjoy sitting on damp grass, bring some folding chairs or blankets for yourself. If you can bring a folding table, call Fred and tell him.

It should be a grand evening, crowned with the usual "Stars and Stripes Forever." See you there. No reservations are needed, but please call Fred about the tables. Thanks.

PS: This is a repeat of the successful event last year.

Contact: Fred Grometer (408) 264-9157

Hikes

Pinnacles Hike

Friday, May 19, 2006 at 10AM

After our last hike at the Pinnacles a couple of years ago, everybody agreed that we should definitely do it again. This year we're going to repeat the Condor Peak/Bear Gulch loop hike, but this time in late spring.

As you approach the Pinnacles, you immediately notice the difference. Rising abruptly out of the surrounding smooth hills are amazing rock formations of spires and crags. These rocks are the remains of an ancient volcano...or rather they are part of the remains, for the rest of the volcano lies 195 miles to the south. The Pinnacles are part of the story of the San Andreas Rift Zone, which runs just east of the park, and of the geological forces that have shaped the landscape in this part of California for millions of years. Sound intriguing? Here's your chance to explore a part of this amazing area, which was designated as a national monument in 1906.

We will be hiking a fairly strenuous loop route of about 5.1 miles, beginning at the Bear Gulch Visitor Center on the east side of the park. The route involves about 1300 feet of elevation gain, and there will be a bit of rock climbing with metal handholds (be sure to wear your hiking boots!). Much of the hike is out in the open with few trees, so we recommend a hat and sunscreen. We'll meet at 10:00 AM at the Bear Gulch Visitor Center.

The drive to the Visitor Center should take about 1-1/2 hours. To get to the park, take Highway 101 south to the Highway 25 (Hollister) exit. Take Highway 25 towards Hollister. Once past Hollister, continue about 30 miles to Highway 146. Make a right turn on Highway 146 towards the park entrance. Once past the park entrance it is another 2.3 miles to the Bear Gulch Visitor Center. Note that this is a National Park, so bring your Golden Eagle pass - otherwise it's a \$5 entrance fee per car. Those wishing to carpool, meet at the Camden Park and Ride (Camden and Highway 85) at 8:15. Bring your lunch and plenty of water

Contact: **Gil or Julie Feller, 247-6769**
jfeller1@ix.netcom.com

Mammoth Big Hike Meeting

Friday, May 26, 2006 Bldg. 011 Cafeteria
2:00 - 3:00 PM

A group meeting will be held Friday, May 26, at 2:00 PM in the West Room of the Building 11 Cafeteria on the Main Plant Site for all those who have signed up for the Mammoth Big Hike 2006 Big Hike. Trip dates are July 23 through July 28, 2006. Trip details and information packets will be distributed at these meetings.

As in previous years, we will be staying at the Mammoth Lakes Holiday Inn. Cost of the trip will be \$680 for two people per room. The cost includes a hot breakfast daily, the Thursday evening banquet, and miscellaneous trip related expenses. Payment is due on or before the meeting date. Checks are to be made out to the "IBM Retirement Club".

Please contact us to confirm your reservations or to sign up for this trip.

Gil & Julie Feller
563 Bucher Avenue
Santa Clara, CA 95051-6203
(408) 247-6769
email: **jfeller1@ix.netcom.com**

Monterey Big Hike Meeting

Friday, May 19, 2006, Bldg. 011 Cafeteria
2:00 - 3:00 PM

A group meeting will be held Friday, May 19, at 2:00 PM in the West Room of the Bldg 011 Cafeteria on the main Plant Site for all those who have signed up for the Monterey Big Hike scheduled for the week of October 1-6, 2006. Trip details and information packets will be distributed at these meetings. If you have not participated in prior Big Hike's and would like more information give Jim or Dottie a call at the number listed below. Although our trip is titled Big Hike, we actually provide a choice of 3-4 short to intermediate hikes each day.

We will be staying at the Bay Park Hotel in Monterey. It is adjacent to the Del Monte Shopping Center. The cost of the trip is \$580 for two people to a room, or \$540 for one person to a room. This includes a Thursday evening Banquet and miscellaneous trip related expenses. Breakfast will be on your own this year. However, the rooms are equipped with Refrigerators and Coffee Makers and there is a Dining Room in the Hotel if you wish to purchase breakfast. Payment is due by the May 19th meeting. Checks are to be made out to the "IBM Retirement Club". Please contact Jim or Dottie to confirm your reservation or to sign up for this trip prior to the May 19th meeting.

Jim & Dottie Riley
1160 Calle Ventura
San Jose, CA, 95120-5504
(408) 268-5482
e-mail: **jrriley@prodigy.net**

one more hike on next page...

Another Hike

Uvas Canyon Hike Friday, June 9, 10:00 AM

Our June hike takes us to lovely Uvas Canyon Park in the southern part of Santa Clara County. The park has some great waterfalls, and with all the rain this spring, perhaps the falls may still be beautiful. There are a couple of options for this hike. The first is an easy, mainly flat loop route of about 1-1/2 miles along the Waterfall Loop Trail, which follows Swanson Creek. At a trail junction about ¾ of a mile along, the Waterfall loop goes back to our starting point.

At the trail junction, those preferring a more difficult hike (translation – hilly!) can continue with the hike leader on the Contour and Alec Canyon trails. Manzanita Point along the Alec Canyon trail offers a spectacular view. Total distance is about 4.5 miles for the more difficult hike.

To get to the park from Highway 85 going south towards Gilroy, exit at Almaden Expressway. Stay in the ramp's middle lane, make the first left, then the next right onto Almaden Expressway. Drive about 4 miles to the end of Almaden Expressway, and turn right onto Harry. Almost immediately, turn left onto McKean. McKean turns into Uvas Road after about 6 miles. Continue on Uvas for about 3.5 miles, and turn right onto Croy. Drive a little over 4 miles to the park entrance at the end of the road. About .4 miles before the entrance you will pass through Sveadal, a Swedish vacation retreat. Note that the speed limit is only 5 miles per hour on this narrow road. You'll have time to look at the quaint little cottages where Swedish flags still fly and you are reminded to look out for the trolls!

We will meet at 10AM at the day use parking area. After going through the entrance (\$5 fee unless you have a county parks sticker) drive up the road a bit and look for the "day use parking" sign on the right side. There are restrooms available near the lot. Bring lunch and water.

Car-poolers meet at the Cottle Park and Ride, Highway 85 and Cottle Road. At 9:30AM.

Directions to Uvas from Cottle Park and Ride: Turn left out of the Park and Ride onto Cottle Road. Turn Left onto Santa Teresa Blvd. Turn right on Bailey, past IBM Santa Teresa. Turn left onto McKean. McKean turns into Uvas Road. Continue on Uvas for about 3.5 miles, and turn right onto Croy. Drive a little over 4 miles to the park entrance at the end of the road. About .4 miles before the entrance you will pass through Sveadal, a Swedish vacation retreat. Note that the speed limit is only 5 miles per hour on this narrow road. You'll have time to look at the quaint little cottages where Swedish flags still fly and you are reminded to look out for the trolls!

Note that the hike leader for June is Lee Westfall. Call him if you have any questions.

Contact:
Lee Westfall
(408) 225-7667
leewestfall@comcast.net

Walking/Cultural Tours

NUMMI Automobile Plant Fremont, California Wednesday, June 7, 2006

Our tour last year was canceled, so we'll try it again this year. We'll tour the NUMMI automobile plant in Fremont. Although you may have visited before, it's always interesting to see this example of modern American manufacturing...a teamwork-based working environment set up by GM and Toyota. Almost 6 million vehicles have been built there. Impressive! Also impressive is the size—5.3 million square feet, 5,300 employees, six models and 390,000 units per year capacity. Get this...we're exporting cars to Japan. WOW!!

Our tour will begin at 12:15 PM; don't be late and miss the train. Let's gather at the Curtner Park and Ride at Highway 87 (not the usual Camden and Highway 85) for car-pooling at 11:00 AM. Riders pay \$3 for gasoline. Because the tour starts at mid-day, there are no plans for lunch; their cafeteria is not available.

We'll go north on Highway 17 (I-880) about 21 miles, turning right at Fremont Boulevard South. Go about 0.3 miles and turn right at Industrial Road/Street. At the Main Gate #5 (0.4 miles), tell the guard about your tour, and he will give you a permit to park in the visitor lot. Walk north along the "cookie-cutter" windows and turn right at the building corner. The signs are helpful. NUMMI is fussy—no cameras and no extra people (above the 40 reserved).

Call Fred to get a seat.
Contact: Fred Grometer (408) 264-9157

The New San Jose City Hall

Tuesday, May 5, 2006

NOTE: New time and place!

We filled up on the first two walks; everyone really enjoyed them. We have scheduled a new tour for Friday, May 5. New time: 10:45 AM. About 20 of you have signed up already for this follow-up tour. Fred will call you to remind you.

The light-rail is convenient, so you can just hop on the train to get to the new city hall at Sixth and Santa Clara. If you drive, park in the basement (from Sixth Street) and get your ticket validated.

Meet at the reception desk, 18th floor. Before the tour, we'll meet with one of the city councilmen (Councilmember Judy Chirco, District 9) at 11:00 on the 18th floor. There, she will explain San Jose in conference room T-1854.

After this encounter, the tour will start on that floor. After the tour, you may wish to go to lunch at a local restaurant. It was nice, after the last tour, to go to the lunch room at the new Martin Luther King Library, only on one block away. You can even sneak in a quick tour there.

If you're already on the list and can't make it, please call Fred so that he may be able to fit in a few more folks. Thanks.

Contact: Fred Grometer (408) 264-9157

IBM Club

IBM Club Discounts

Movie passes

Cinelux: \$5.00 - no restrictions
Regal/United Artists: \$6.00
AMC: silver \$5.50; gold \$7.00

Universal Studios

Gate price: \$55.00, ages 3 and up
IBM Club price: \$40.00 Three day ticket!

Disneyland single day-one park

Gate price: \$59.00 3-9 years: \$49.00
IBM Club price: \$47.20 3-9 years: \$39.20

Disneyland 3-day park hopper

Gate price: \$149. 3-9 years: 119.
IBM Club price: \$119.20 3-9 years: \$95.20

Disney World single day-one park

Gate price: \$67.10 3-9 years: \$55.38
IBM Club price: \$53.68 3-9 years: \$44.31

Disney World 3-day park hopper

Gate price: \$235.37 3-9 years: \$201.29
IBM Club price: \$188.30 3-9 years: \$161.03

Legoland

Gate price: \$49.95 3-9 years \$41.95, two days
IBM Club price: \$32.95, two days

SeaWorld

Gate price: \$53.00 3-9 years: \$43.00
IBM Club price: \$40.75 3-9 years: \$35.50

Heavenly ski lift tickets

Gate price peak: \$73; 13-18 years: \$60; 5-12 years: \$38.
IBM Club price: \$58; 13-18 years: \$47; 5-12 years: \$28.

Squaw ski lift tickets

Gate price: \$64. all ages.
IBM Club price: \$53.

Northstar / Sierra ski lift tickets

Gate price: \$63; 13-22 years: \$49; 5-12 years: \$49
IBM Club price: \$51; 13-22 years: \$42; 5-12 years: \$14
If used at Sierra, an \$8 meal voucher included.

Payment by check or money order only, no cash,
no credit cards. Checks or money orders should be
made payable to IBM Club

Ticket Hours:

Wednesday & Friday: 11:00 AM - 1:00 PM

San Jose Site: Bldg. 50, room 195,
*Go into the building 50 lobby
and ask security there to buzz you
into the IBM Club office.*

IBM Club Office Contacts:

Valerie Cowing - 463-2462
Frank Vitale - 463-2455

IBM Club Web Site for Retirees

In the past, in order to access the IBM Club web site, you had to be an IBM employee. Retirees could not access the site. Recently, IBM has made an IBM Club web site available for IBM retirees. It is a global web site containing information about IBM Clubs all over the world.

In order to access this web site, you must first register. Then you can subscribe to whatever IBM Club is closest to where you live or to multiple IBM Clubs. Our local club is the Silicon Valley IBM Club.

The address of the web site: **www.ibm.com/ibm/ibmclub**

Once you get there you will need to give an e-mail address and a password in order to register. You must also specify which IBM Club you are interested in.

Contact: **Walt Cole, 972-1178, opawalt@pacbell.net**

Swap'N'Shop

Do you remember the old Swap 'N' Shop board in the cafeteria? You could submit a 3x5 card and it would be posted describing the things you wanted to sell or buy. Well, it is now online. IBM employees and retirees can participate. On the first day, more than 100 items were posted and 10 times that number of employees browsed through the site. **www.employeeswapshop.com/ibmer**

On Demand Community

Register and learn about volunteer opportunities and track volunteer hours. By logging in and tracking your volunteer hours, you have the opportunity to get a Community Grant which may help support the program you are working with -- \$1000 cash or up to \$2500 in equipment.

To register or sign in to the On Demand Community web site, just google "**ondemandcommunity**," and click on the first result.

Discount Web Site for IBM Retirees

There is a new web site that IBM retirees can use to obtain discounts on a wide variety of products and services from many companies. Included are discounts on a wide variety of IBM PCs. But everything from home electronics to auto insurance is offered. If you are interested, go to the following URL.

www.beneplace.com/ibmretirees/

IBM Retiree ID Card

IBM retirees that have lost, or never had, or just cannot find their IBM Retiree ID card can call and get one.

Call the IBM Employee Service Center:
1-800-796-9876.

Adopt-A-Highway

Thursday, April 13, 2006

It is a bit hard to write about a non-event in our monthly chat about our Community Service Project (Adopt-a-Highway) adventures.

April 13 was Passover....and that is what we did...passed over the cleanup. Although it did not rain that day, the slippery slopes and wet pavement were no place for us!

Come and see us at the Retirement Club picnic on Tuesday, May 23. We will have a display showing some of the fascinating aspects of litter collecting and maybe even a freebie or two (plus the food and renewing old acquaintances makes for a fun event).

This is also an opportunity for signing up so you too can have fun beautifying our freeway.

We have a pool of 45 volunteers and can always use more. About 16 to 19 people participate in our monthly clean. We ask our litter crusaders to go out a minimum of 4 times a year. To join us, give us a call, e-mail, or see us at the Picnic, Tuesday, May 23 at Cunningham Park.

0 bags for April - totaling 1689 bags

Schedule: meet in VTA Parking lot 8:45 a.m.
Wednesday, May 10, 2006 second Wednesday
Thursday, June 8, 2006 second Thursday

Callers: Alice Czerniec 224-6230
Barbara Pugh 265-2466

Contact:
Doug & Evelyn Dean, 264-9502 dougnevie@comcast.net

We are more valuable
than any of the younger
generation:

We have silver in our hair.
We have gold in our teeth.
We have stones
in our kidneys.
We have lead in our feet
and
We are loaded with
natural gas.

So There!!

IBM Retirement Club Web Site:
www.sjpc.org/sjrc

The current month's newsletter is available at the web site above **before you get it in the mail.** It is there by about the first of the month. Click on **Newsletters** when you get to the web site. The newsletter is in PDF format and can be viewed, saved and/or printed with the free Adobe Reader program. If you have questions about this modern digital way to obtain the newsletter,

Contact:
Walt Cole
408 972-1178,
opawalt@pacbell.net

PC Club Meeting

Tuesday, May 9, 2006, 5:00 PM, SVL

Pat McMahon, Club member, will give a presentation on the Microsoft Excel spreadsheet program. Excel contains powerful tools to help you capture, calculate, analyze, manage, and share data more effectively. Items that will be discussed include basics of a spreadsheet (columns, rows, and cells), types of data (labels, constants, and formulas), customization options, navigation tips, powerful built-in calculation functions, copying, formatting, inserting, deleting, and creating charts. Multiple practical examples of the use of spreadsheets and graphs for personal applications, such as financial planning, record keeping, weight monitoring, and medical history, will be discussed.

See the PC Club web site for directions to the meeting:

www.sjpc.org

Contact for questions:

Walt Cole 972-1178 or opawalt@pacbell.net

RV Camping Club

The IBM Camping Club (Krazy Kampers) is open to all IBM retirees. For a review of the camping schedule go to the website: www.sjpc.org/camping/

Contact: Ernie Veal,
(408) 224-3584, ecveal@juno.com



China/Hong Kong Trip Report

Continued from page 1

Everywhere we went we were besieged by persistent peddlers with knockoff watches, postcards and trinkets. The prices demanded sometimes dropped by 75% or more as you boarded the bus. In Beijing there is a knockoff market that is 5 stories high, with brand name clothing, Rolex and other big brand watches, sporting goods, luggage, etc. We toured silk, Clausinne, jade and pearl factories. Our national tour manager was outstanding, as were most of our city guides. You used bottled water for everything, and even then we had a few people who were very sick for mostly 24 hour periods. The tour company is sending out the usual survey forms, but the feedback we have received, with some exceptions, is very positive. As usual, one of the great results of a trip like this is that you renew and enhance old friendships and gain new ones. IBMers and their family and friends are great people to travel with.

George and Isobel Nale

Bowling

One More Time League at AMF Oakridge Lanes 2005/2006 Winter League April 12, 2006

1st Place: Team #24, "Team 24": Dan Thery, George Zagelow, Joanne White, Tom White

2nd Place: Team #9: "BEEKS": Ken England, Shirley Beyler, Ed Henschel, Ed Bernhardt

Individual Achievements

Ladies

Men

High Averages

166-Faye Fritz
164-Jan Curry
160-Chila Miller
160-Ann Wilson

200-Jim Balistreri
199-Ron Bianco
199-Bill Jeung
197-George Zagelow

High Scratch Game

225-Ann Wilson
224-Marilyn Bianco
219-Chila Miller

268-Ron Bianco
268-Bill Jeung
267-Jim Balistreri
258-Dennis Pitchford
258-Don Creps

High Scratch Series

587-Faye Fritz
586-Ann Wilson
563-Chila Miller

695-Jim Balistreri
688-Ron Bianco
684-George Zagelow

High Handicap Game

276-Marilyn Bianco
264-Bev Turner
264-Phyllis House
261-Ann Wilson

283-Sam Walters
282-Don Creps
280-Paul Houghton
280-Wes Berg
280-Paul Houghton

High Handicap Series

713-MaryJane Canavan
704-Jeanne Kile
695-Iris Pruet

738-Ed Bernhardt
729-Fred Mitchell
715-Wes Berg

May 3, 2006: Final bowling day for Winter league
May 10, 2006: Summer league meeting & no-tap bowling
May 17, 2006: Summer league starts
Sep 6, 2006: Winter league starts with meeting and no-tap.
Sep 13, 2006: Winter league bowling starts.

The Summer league is a good time to learn to bowl or to get back into bowling if you missed it for a few decades. So show up at Oakridge Lanes on May 10th (or even later) to join!

Contacts:

Topsy Thompson 377-4314

Sue Erlich at Oakridge Lanes 578-8500

Short 18-Hole Golf

Deep Cliff Golf Course in Cupertino

April 6, 2006 - Out of 28 players who signed up for golf, 23 showed up. Mother Nature fooled the five; it turned out to be a beautiful day. The format was Individual Golf.

Winners were:

Men	Women
1st Andy La Scola 55	1st Kathy La Scola 63
2nd Jerry Condensa 59	2nd DeDe Corral 67
3rd Jim Viallet 60	3rd Kathy Herrington 70
4th Don Johnson 61	4th Clara De Paul 73
	Marge Condensa 73

Closest to the Pin #10

1st Jerry Condensa 15' 9" Kathy Herrington 18'
2nd Andy La Scola 21'1"

The next golf dates are Thursdays, May 4 and June 1, 2006 at 10:30 am, sharp. Please be there by 10:00 am to sign in and to pick up your lunch coupon from Helen. Please send your check for \$22 15 days in advance of our golf date (or sooner) to:

Helen Wehner
1561 Park Crest Ct.
San Jose, CA 95118

Or call Helen to let her know you'd like to play that day. Sign ups will be on a first-come-first-serve basis, since there is a limited number of players allowed. Make your check out to the **"IBM Retirement Club"** and on the memo line write **"Short 18 Hole Golf"**. Handicaps will be figured out after you have golfed at Deep Cliff. If it rains, call the golf course to find out if we have canceled. Phone 253-5357, extension 5. Also, remember golf at Deep Cliff is on a first come-first serve basis so get your checks in to Helen **right away.**

Happy Golfing from **Clara, Helen and DeDe**

Contacts: Helen Wehner 264-6296
DeDe Corral 378-6470
Clara De Paul 294-7041

Watson Senior Bowling Tournament

Friday, May 12, 2006, 9:30 AM

Oakridge Bowling Lanes

We will bowl 4 games, and will take the best 3 games. Price for this Tournament is \$10.00

It includes **"Lunch and Bowling"**

If you come for lunch only, it's still \$10 (invite a friend)
You must be 50 or older to bowl in this tournament.

You must sign up so we know how many will be bowling. Be at the Bowling Alley, at 9:00 AM, and ready to start bowling at 9:30 AM.

If you are interested please sign up at the bowling alley, or call:

Sue Ehrlich, 578-8500, Oakridge Lanes

Frank Vitale, 463-2455

Topsy Thompson, 377-4314

Par Tee Golf

Contact: Andy La Scola @ (408) 371-3329 or alascola@earthlink.net

Laguna Seca – April 10, 2006. No “Shot-Of-The-Day” or “Funny-Things-That-Happen-On-A-Golf-Course” stories to report--- But, we can honestly say it was another beautiful day to be out on the course!

While most of you were in “pouring down rain San Jose,” those of us who played golf at Laguna Seca enjoyed, first, an overcast day, and then a beautiful warm sunny day--- (And I have pictures to prove it). We had a nice turnout of 39 golfers. The format of play was “2 best ball foursome”. Here are the results:

<u>Place/Score</u>	<u>Team</u>			
1 / 123	Joe Sordi	Wally Gibson	Deen Hamid	Craig Heacock
2 / 124	Rich Campbell	Gwen Kaefer	Mel Rodinsky	Fran Plummer
3 / 127	Jerry Condensa	Marge Condensa	Ray Jelesky	Bill Kurtz

<u>Closest-To-Pin</u>	<u>#2</u>	<u>#8</u>	<u>#12</u>	<u>#14</u>	<u>#17</u>
<u>Men</u>	Ed Citti 1' 5"	Joe Guerra 5' 1"	Jerry Condensa 50' 6"	Deen Hamid 1' 1"	Ralph Lyle 4' 1"
	Chuck Loney 20' 2"	George Zagelow 42' 6"		Pat Arnett 10' 6"	Bill Avery 4' 7"
	Phil Nielsen 20' 7"			Bob Lyle 11' 8"	Earl Bowers 5' 1"
<u>Ladies</u>					Kathy La Scola 35' 43"
					Fran Plummer 41' 11"

There were five bogey golfers, (gross score of 89 or better), and they are: Nick Nomm 82; Deen Hamid 83; Ralph Lyle 84; Andy La Scola 86; and Bob Lyle 88. Congratulations to all the winners!

Looking ahead at our schedule:

<u>Date</u>	<u>Course</u>	<u>Cost/Due</u>	<u>Notes</u>
May 15	Sunnyvale Municipal	\$40.00/Apr. 26	Soft spikes required - Format = 2 best ball foursome
Jun. 12	Rancho Canada-West	\$35.00/May 24	Soft spikes required - Format = 2 best ball foursome
Jul. 17	Boulder Creek	\$40.00/Jun. 28	Includes box lunch; Soft spikes required. Format=2 best ball foursome
Aug.14	Poppy Hills	\$75.00/ Jun. 28	Includes cart-soft spikes req'd-Bob Slater Memorial-individual play

Note---I must send in payment by July 5---Get your payment in early!!! 60 players MAX! No Cancellations!!!

Sep. 11	Coyote Creek-Valley	\$55.00/Aug. 23	Includes cart-soft spikes required-2 best ball foursome
---------	---------------------	-----------------	---

Notes:

- The monthly golf schedule for the entire year can be seen on the IBM Retirement Club web site: www.sjpc.org/sjrc
- To join the “Par Tee Golf Club,” (membership cost is \$45) contact Don Johnson at (408) 997-9452 or maxdonmar@comcast.net
- Prices are subject to change. Be sure to check newsletter or web site, for latest information.
- Make all checks payable to **Par Tee Golf**, (not the IBM Retirement Club). Please make your checks for only one tournament at a time. (If you are signing up for two tournaments, send two checks). The mailing address for signups is:

Par Tee Golf, P. O. Box 53535, San Jose, CA 95153-0535

- Include you GHIN number, and your e-mail address, (If I don't have already have them on file). Indicate which foursome you wish to play with, or I will assign you to one. (Note: If you do not sign up as a foursome, your group may be split up).

San Jose IBM Retirement Club 21st Annual Picnic

Reservation Form — Fill out and mail now!

Name: _____ Spouse/Guest: _____

Phone: (____) _____ e-mail address _____ (optional)

Please Reserve: # of persons: _____ Buffet at \$17.00 each (total number of persons who will attend)
Please make checks payable to IBM Retirement Club, and mark them 'PICNIC' in the memo field.

MAIL TO: Terry Milinic'
1480 Bryan Ave
San Jose, CA 95118-1705

===== Cut Here =====

San Jose IBM Retirement Club 21st Annual Picnic

Tuesday, May 23, 2006

Cypress Pavilion Group Picnic Area

Cunningham Park, 2305 South White Road, San Jose

Reservation Deadline: May 17, 2006

No tickets will be sold at the park!

No tickets will be mailed. You pick them up at the registration table the day of the picnic.

10:30 AM Arrival, coffee and goodies
11:00 AM Walking Group will lead a walk through the Park,. Bring your walking shoes.
12:00 Noon Lunch to be served promptly
1:30 - 3:00 PM Activities: Door prizes, games, golf, horseshoes, bingo and more.

All You Can Eat BBQ Buffet Lunch by C. B. Hannegan's of Los Gatos

MENU

BBQ Tri-Tip Steak	Fresh Fruit Salad Bowl
BBQ Finger-Licking Chicken	Vintage Potato Salad
Italian Chicken Sausage	Breathless Garlic Bread
Hannegan's BBQ Beans	Vegetarian Lasagne
Salinas Green Salad with honey mustard dressing	
Ice Cream Sundaes	
Soft Drinks & Water	
Coffee	

Your checks will be held until the reservation deadline before they are deposited.

Cancellations must be received by May 17, 2006 if you wish a refund!

Don't forget to bring your old glasses for the doctors who distribute them to those who need them around the world.



San Jose IBM Retirement Club
San Jose IBM Club
1600 Cottle Road
San Jose, CA 95193

2006 - 05

PRESORT STANDARD
U.S. POSTAGE PAID
SAN JOSE, CA
PERMIT NO. 1309

Address Service Requested

Lake Cunningham Regional Park
IBM Retirement Club Picnic Site, Tuesday, May 23, 2006
San Jose, California

